

LINEA DE CORTE DE ORIGINAL  
LINEA DE CORTE DE COPIA

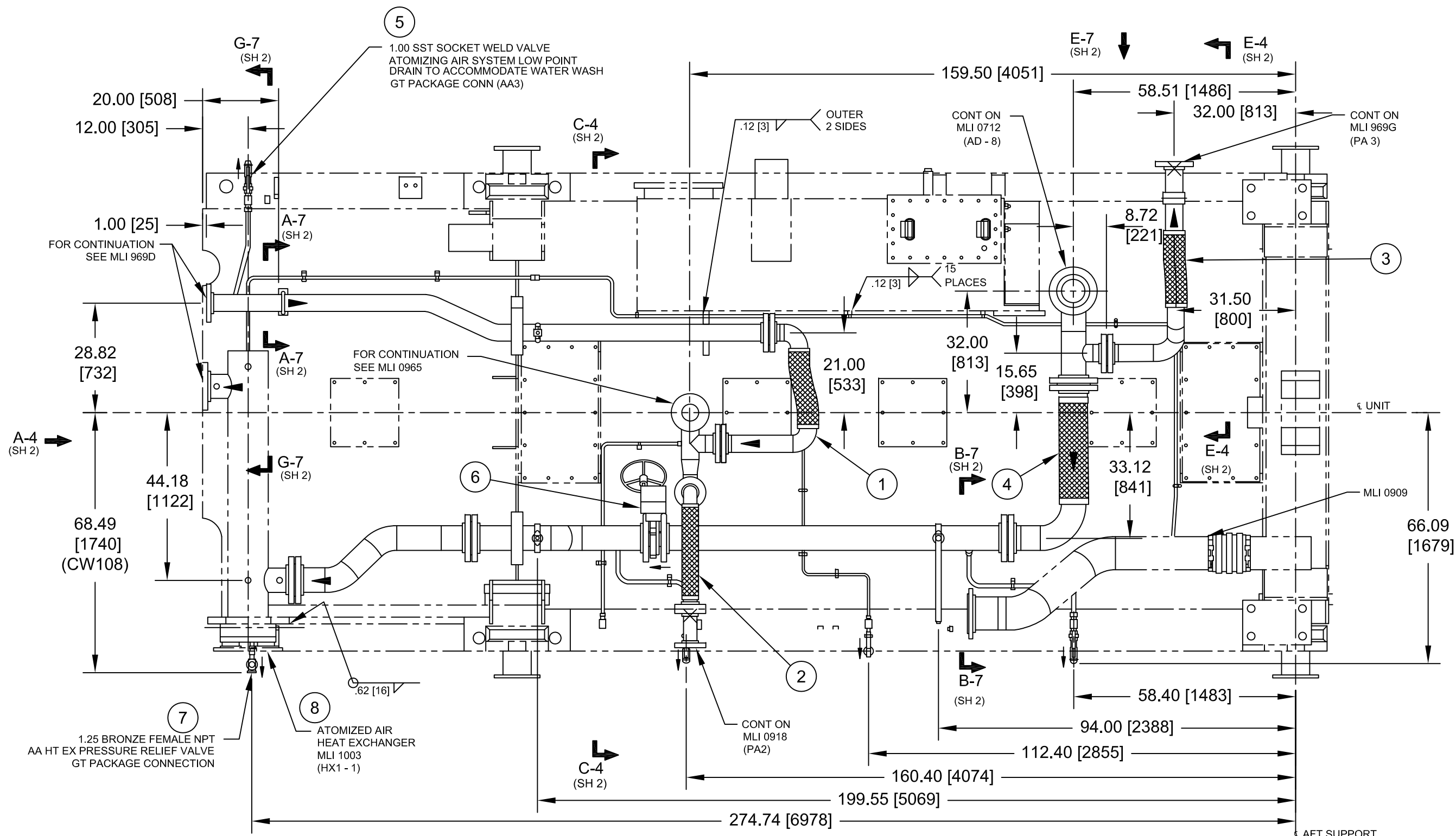
AGM-02-0204-PLA-M-0031  
N° PLANO:

NOTES :

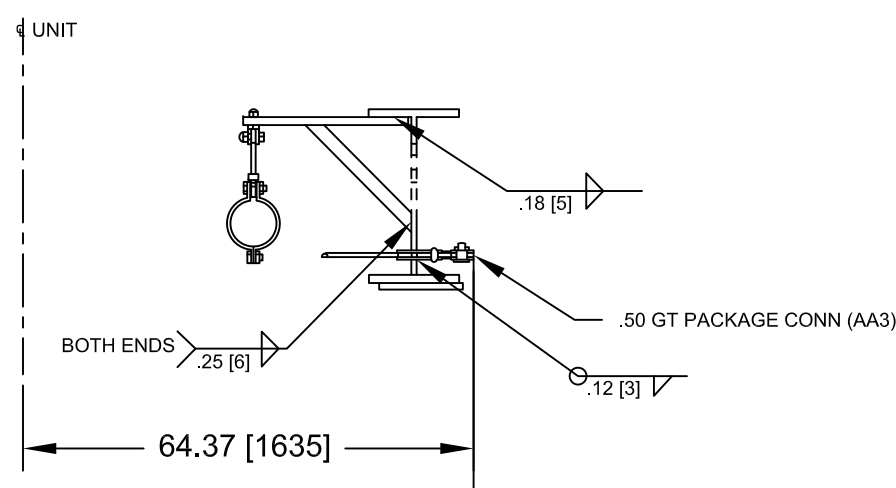
- GENERAL MACHINING APPLIED PRACTICES ARE PER 348A9200.
- PIPING APPLIED PRACTICES ARE PER 351A3700.
- PIPING WELDS ARE PER P8A-AG3, FIGURE PER APPENDIX IXII, FILLER METAL COLUMN AE-L PER APPENDIX I, ASSEMBLY WELDS ARE DESIGNATED WITH A SYMBOL "X", IF APPLICABLE.
- STRUCTURAL WELDS ARE PER P8A-AG1, FIGURE PER APPENDIX III, FILLER METAL COLUMN AB PER APPENDIX II.
- INSTALL AND SUPPORT TUBING PER 215A4435.
- CLEAN AND PAINT PER MLI 0108.
- INSTALL TUBE UNIONS AS REQUIRED.
- TUBE RUNS ARE ILLUSTRATIVE ONLY.
- FLOW DIRECTIONS IS DESIGNATED WITH AN ARROW SYMBOL.
- VALVE ORIENTATIONS ARE SUGGESTED AND MAY BE ROTATED TO AVOID INTERFERENCES.
- MAXIMUM SUPPORT DISTANCE FOR TURBINE:  
0.375 [9.5]OD - 18.00 [457]  
0.50 [12.7]OD - 22.00 [559]  
0.75 [19.1]OD - 24.00 [610]  
1.00 [25.4]OD - 30.00 [762]
- CUT PIPE SUPPORTS TO SUIT LENGTH AND USE 0.12 [3] FILLET WELD ALL AROUND.
- FLEX HOSE TO BE INSTALLED IN A STRAIN FREE CONDITION.
- RETAIN SHIPPING COVERS AND PLUGS AS SUPPLIED WITH ATOMIZING AIR HEAT EXCHANGER.
- SYSTEM PARAMETERS AND SPECIFICATIONS ARE BASED ON TYPICAL REQUIRMENTS FOR 7EA DLN 1.0 DUAL FUEL SYSTEMS AND CUSTOMER SCOPE OF WORK.
- THIS DRAWING IS A REPRESENTATION OF DUAL FUEL CONFIGURATION WHICH INCLUDES ORIGINAL, MODIFIED, AND NEW EQUIPMENT.

IMPORTANTE  
ESTE PLANO FUE ELABORADO EN AUTOCAD V.2008  
CUALQUIER MODIFICACION REALIZADA EN CAMPO  
DEBERA SER NOTIFICADO A LA UNIDAD  
RESPONSABLE.  
QUEDA PROHIBIDO CORREGIR ESTE PLANO SIN  
AUTORIZACION DE ESTA UNIDAD.

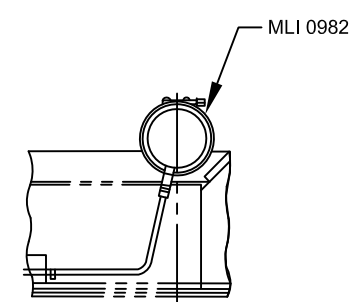
ALL DIMENSIONS IN BRACKETS [ ] ARE  
MILLIMETER, EXPRESSED DIMENSIONS  
ARE INCHES



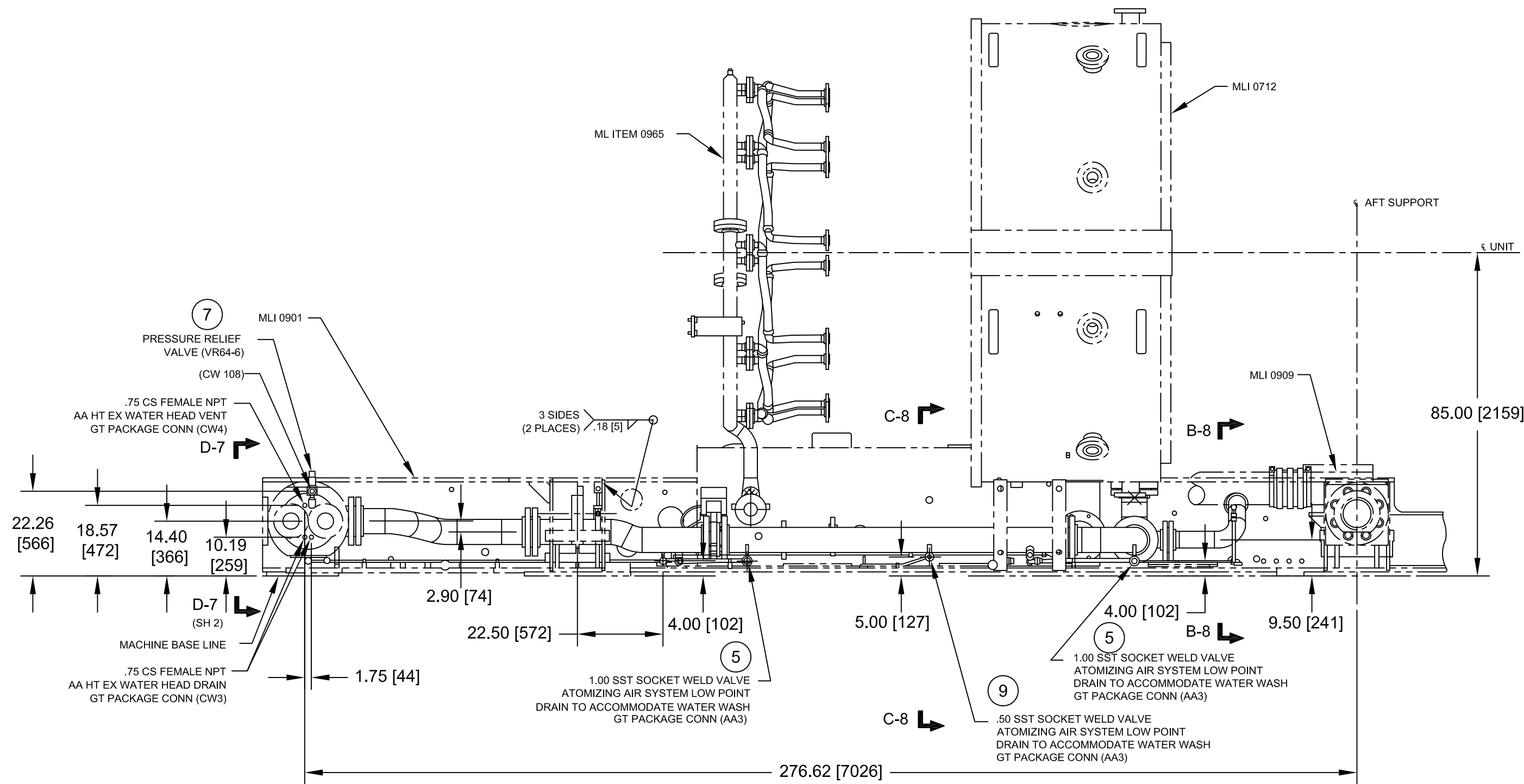
SEE SHT 3 FOR ISOMETRIC VIEW



SECTION C - 8



SECTION B-8



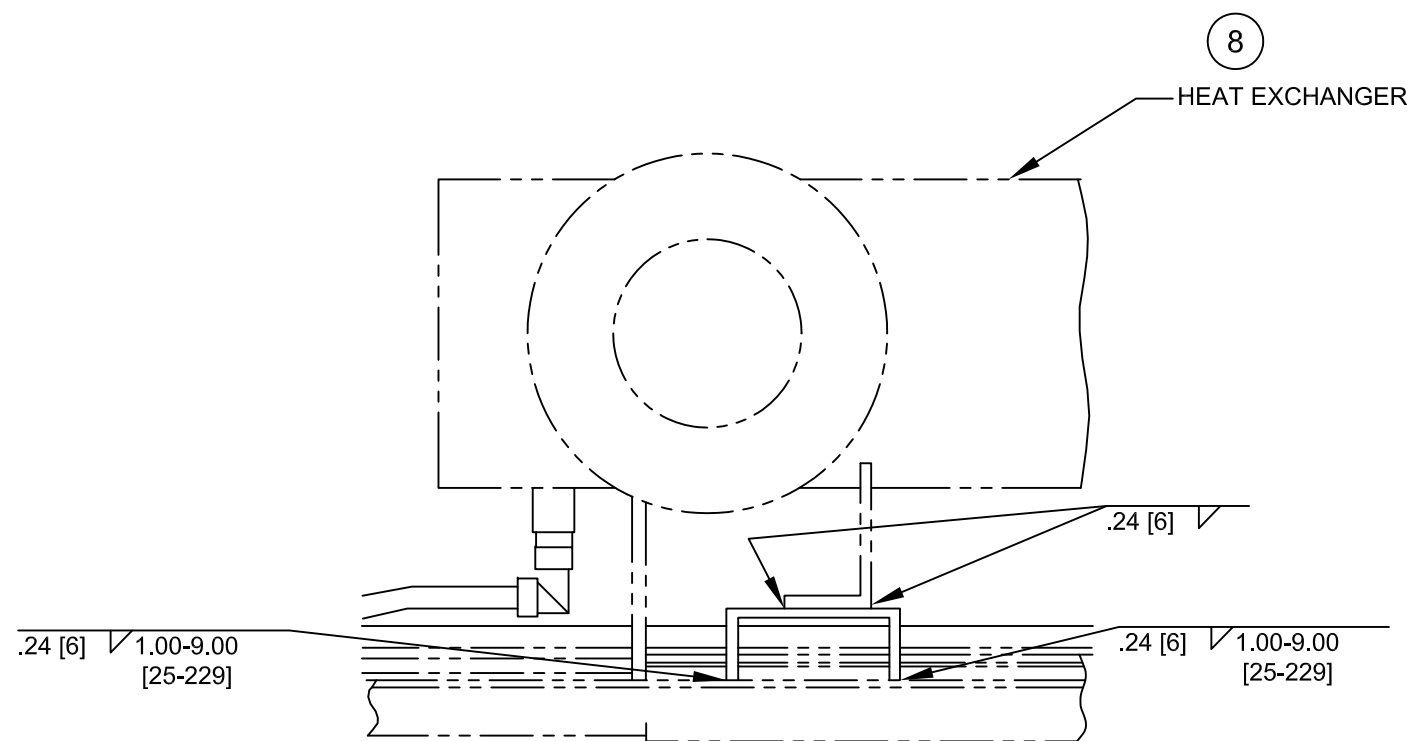
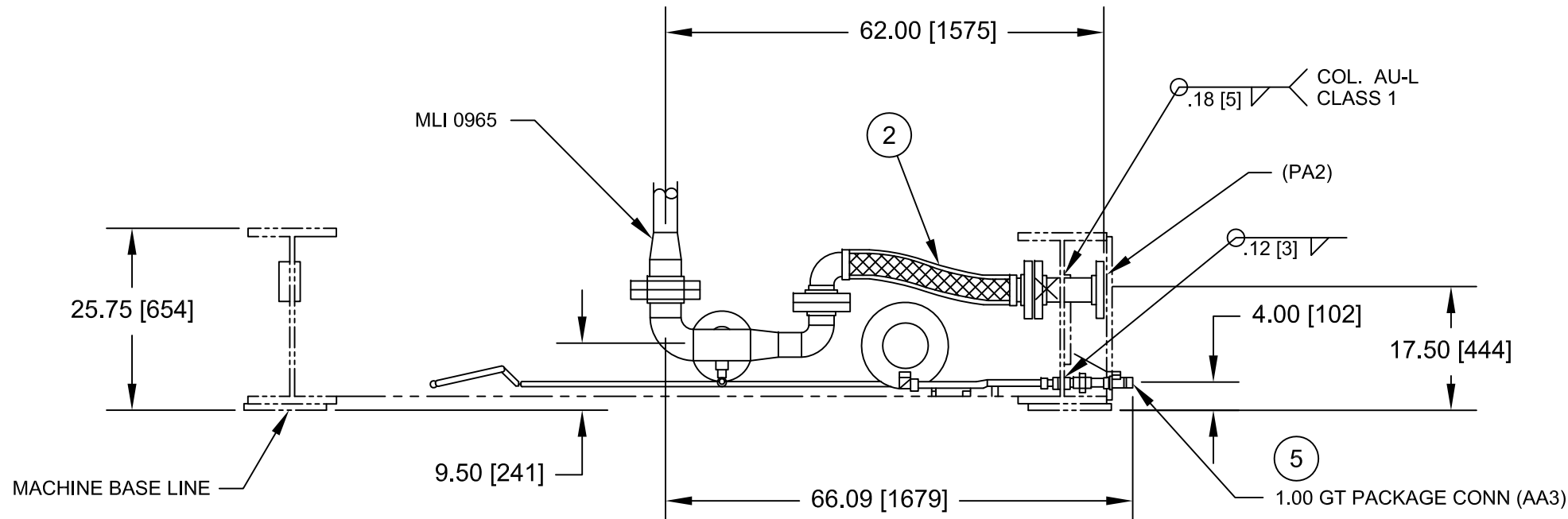
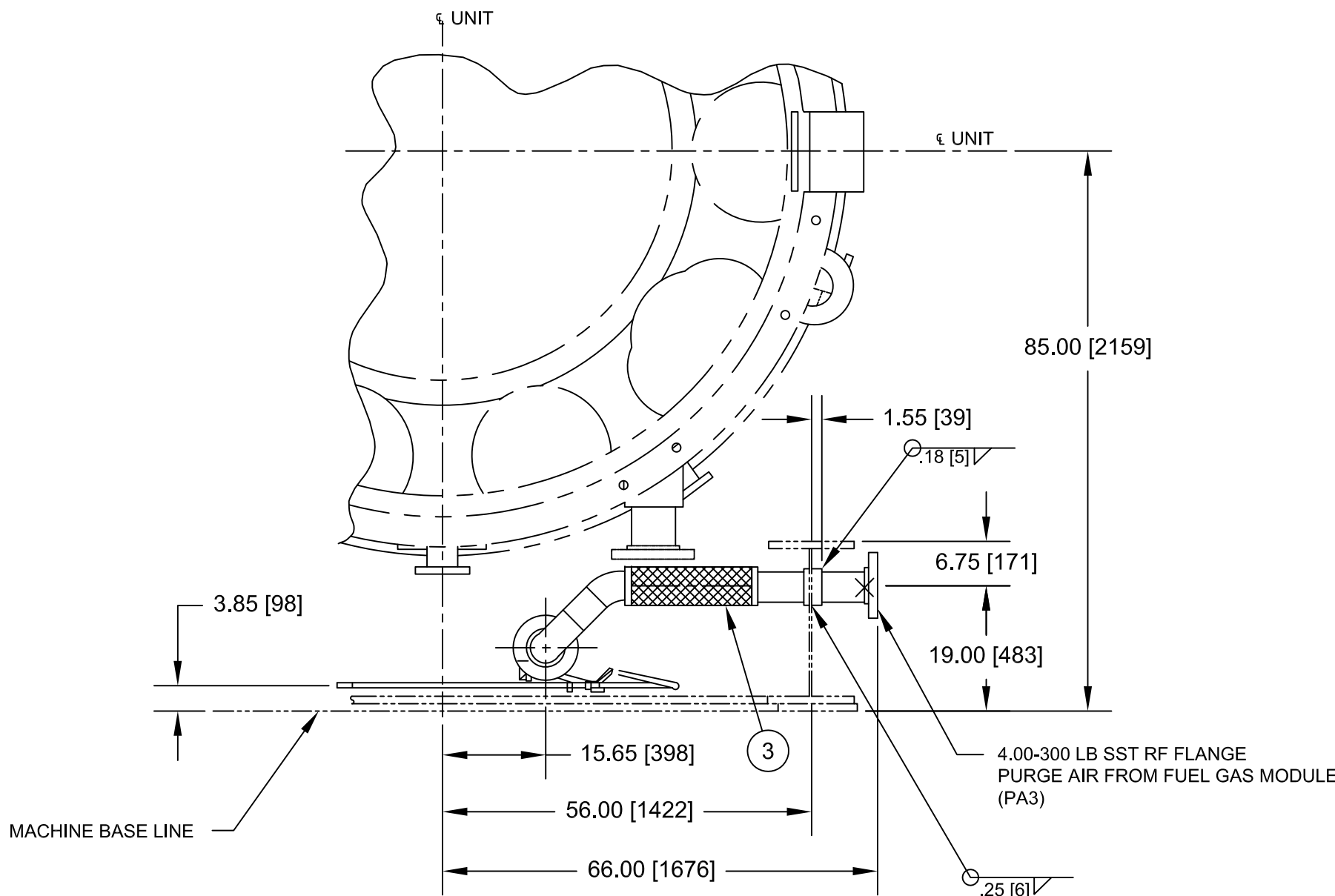
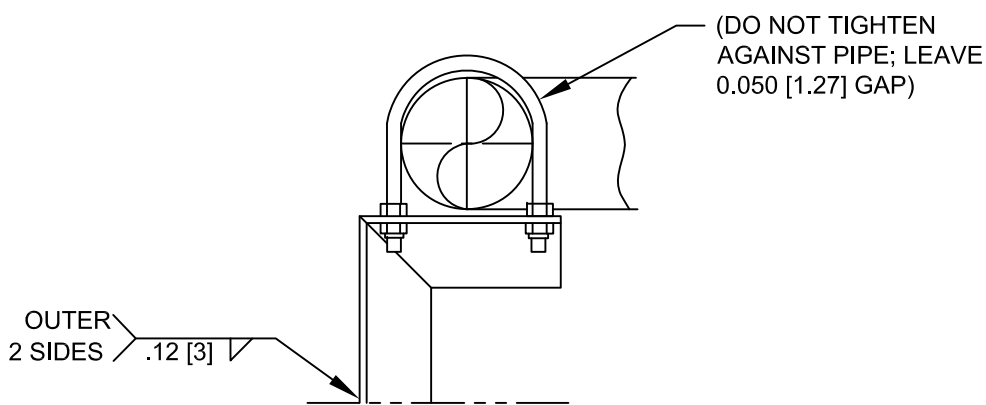
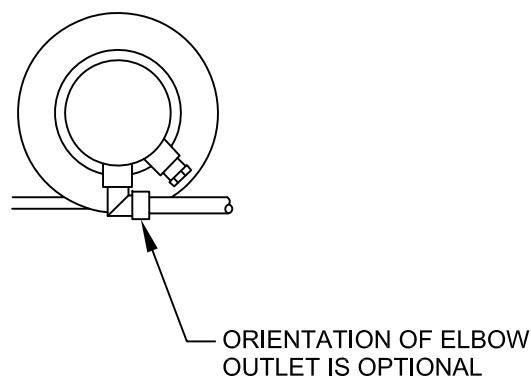
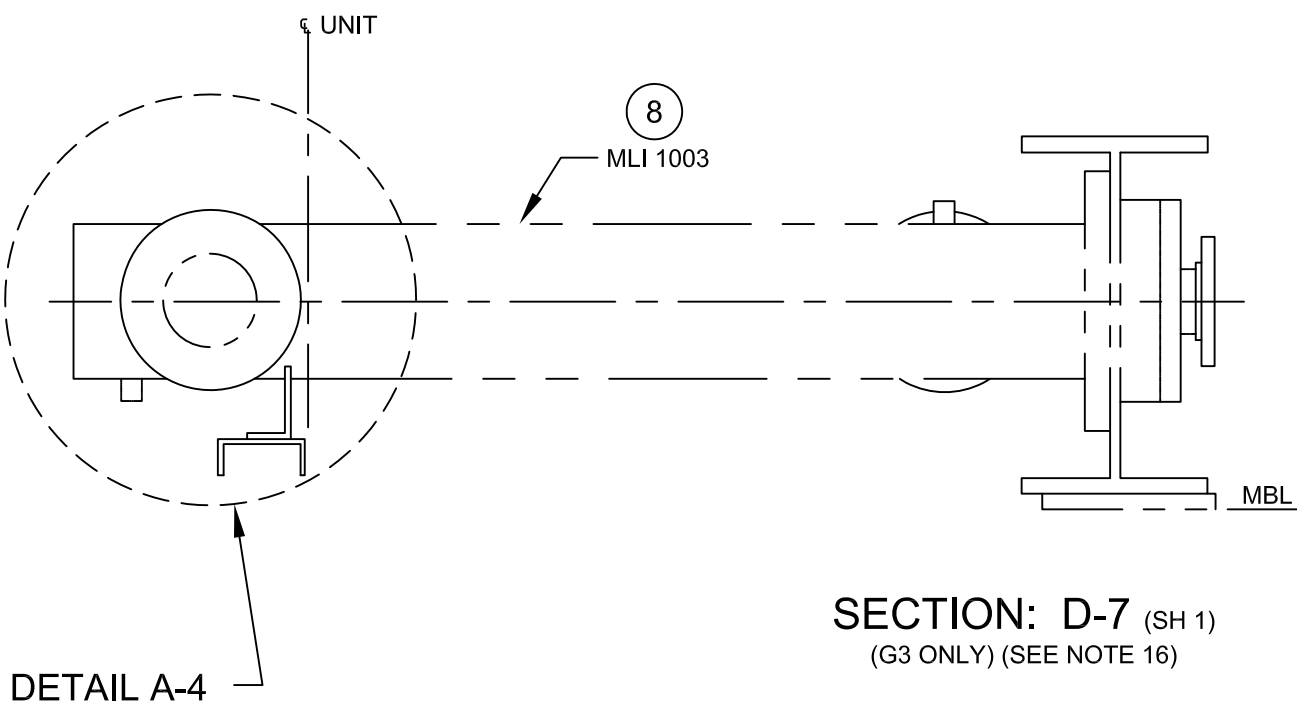
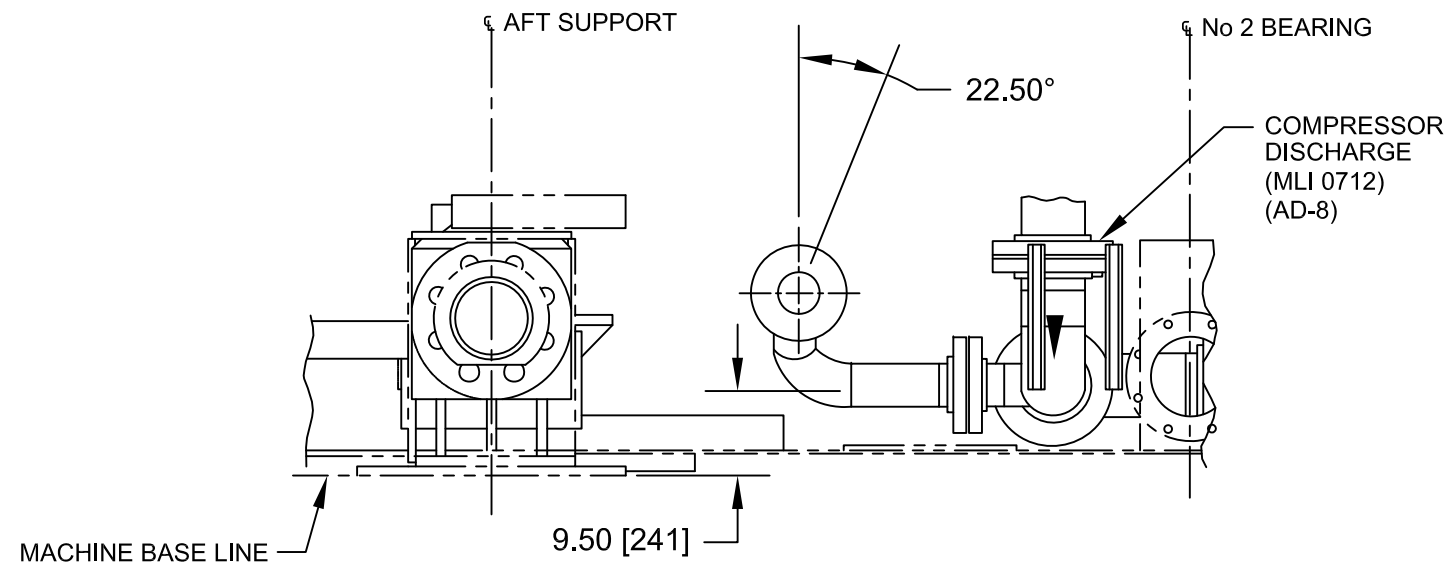
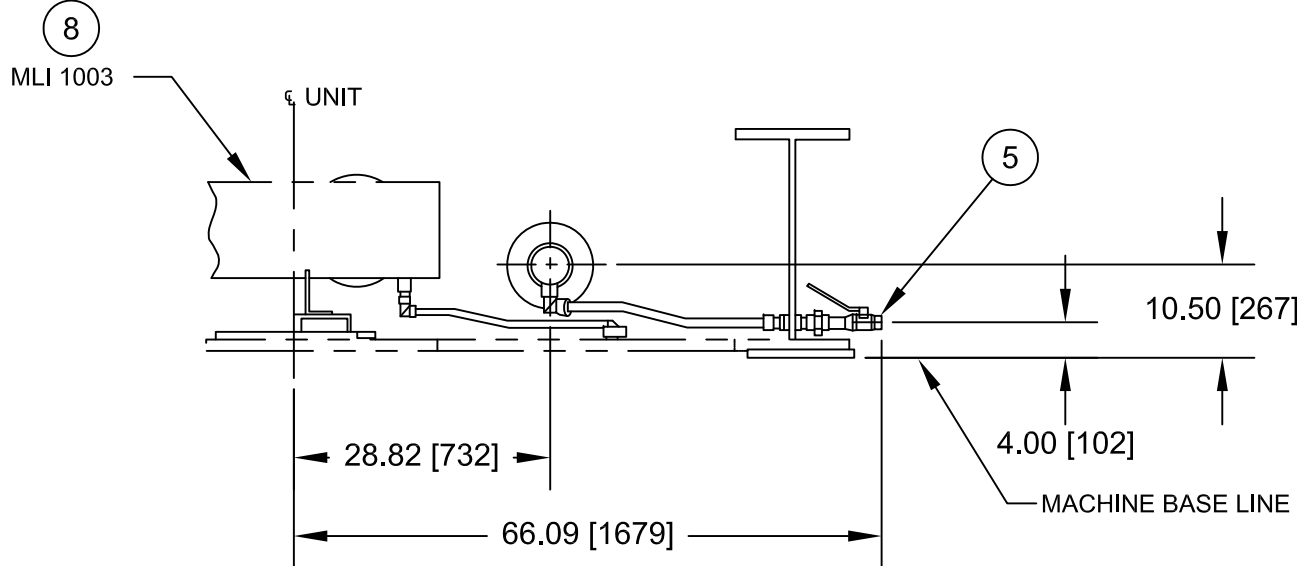
PARTS LIST				
ITEM	QTY	DEVICE No	DESCRIPTION	VENDOR/MODEL
1	1	N/A	FLEX HOSE	MICROFLEX / AA-14
2	1	N/A	FLEX HOSE	MICROFLEX / AA-27
3	1	N/A	FLEX HOSE	MICROFLEX / AA-11
4	1	N/A	FLEX HOSE	MICROFLEX / AA-31
5	3	N/A	1" BALL VALVE	SWAGELOK / SS-65TF16
6	1	N/A	6" BFW (BUTTERFLY VALVE)	FLOWSERVE / 6-BX2-L381TR9N9NFR
7	1	VR64-6	RELIEF VALVE	KUNKLE / 912BFEM01-JE
8	1	HX1-1	AA HEAT EXCHANGER	ITT STANDARD / 10064-C300-2P
9	1	N/A	1/2" BALL VALVE	SWAGELOK / SS-65TF8

N° DE DOCUMENTO	DESCRIPCIÓN	REV	FECHA
DOCUMENTOS DE REFERENCIA			
AGM-02-0204-PLA-M-0029	ATOMIZING AIR INTERCONNECT		
AGM-02-0204-PLA-M-0026	ATOMIZING AIR - TURBINE COMPARTMENT		
AGM-02-0204-PLA-M-0020	FUEL NOZZLE PURGE		
AGM-02-0204-ESP-0061	INTERCONNECTION POINTS		

PROYECTO N°: 409-2956-1		REV: 19/07/11	
CALCULO: C. Brown		FECHA: 19/07/11	
DIBUJO: S. Boerckel		DISK N°	
APROBADO: T. Koontz		ESC./PLOTED:	
ARCHIVO:		ARCHIVO:	
REF. FABRICANTE		FABRICANTE	
REF. FABRICANTE		O/C:	

LINIA DE CORTE DE ORIGINAL  
LINIA DE CORTE DE COPIA

AGM-02-0204-PLA-M-0031  
N° PLANO:



DETAIL: A-4  
(G3 ONLY)  
(ROTATED 90° CCW)  
(ENLARGED)

REF.	FABRICANTE				
REF.	FABRICANTE	FABRICANTE	O/C:		

IMPORTANTE  
ESTE PLANO FUE ELABORADO EN AUTOCAD V.2008  
CUALQUIER MODIFICACION REALIZADA EN CAMPO  
DEBERA SER NOTIFICADO A LA UNIDAD  
RESPONSABLE.  
QUEDA PROHIBIDO CORREGIR ESTE PLANO SIN  
AUTORIZACION DE ESTA UNIDAD.  
ALL DIMENSIONS IN BRACKETS [ ] ARE  
MILLIMETER, EXPRESSED DIMENSIONS  
ARE INCHES

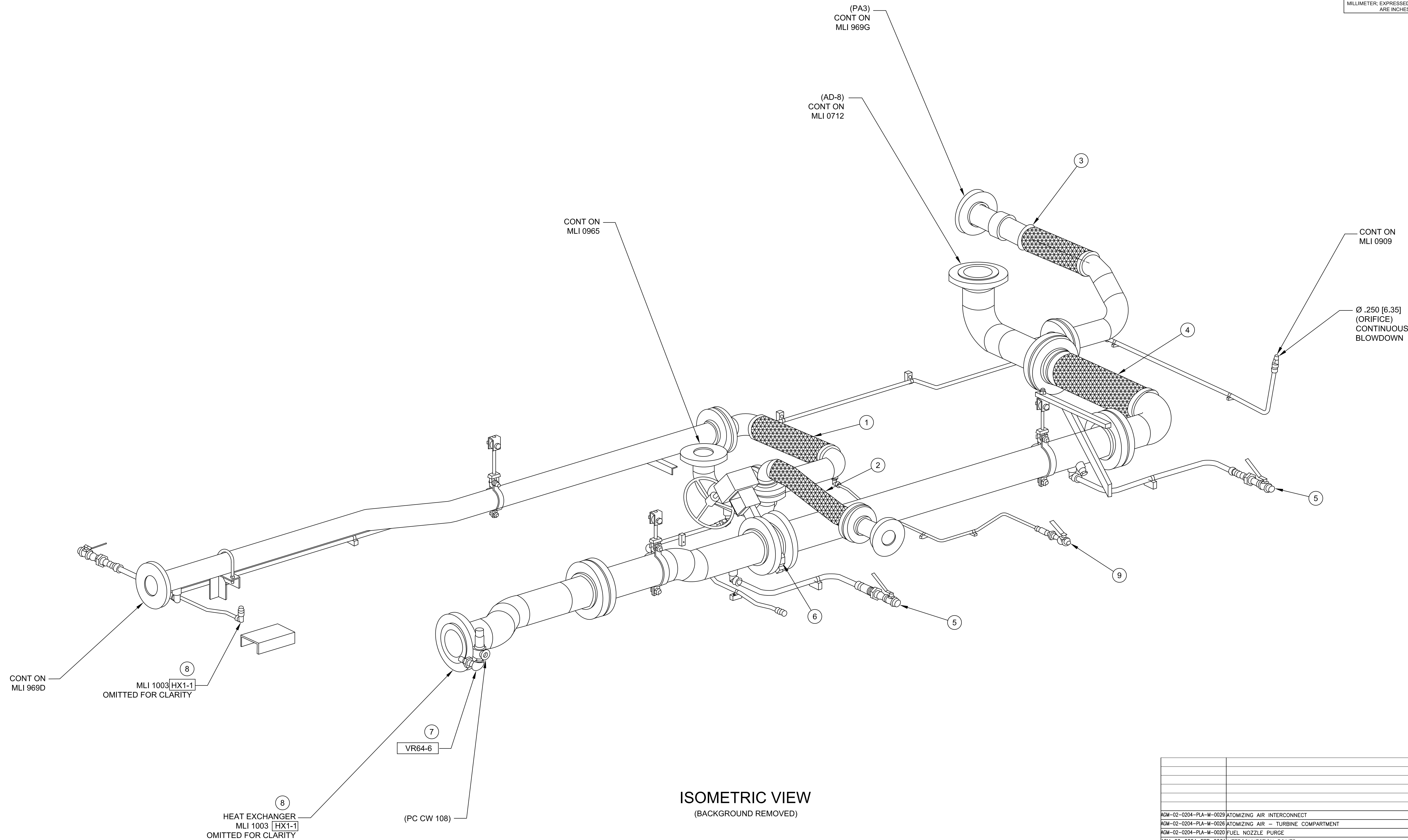
AGM-02-0204-PLA-M-0029 ATOMIZING AIR INTERCONNECT			
AGM-02-0204-PLA-M-0026 ATOMIZING AIR - TURBINE COMPARTMENT			
AGM-02-0204-PLA-M-0020 FUEL NOZZLE PURGE			
AGM-02-0204-ESP-0061 INTERCONNECTION POINTS			
N° DE DOCUMENTO	DESCRIPCIÓN	REV.	FECHA
DOCUMENTOS DE REFERENCIA			
<div><div><div>DERWICK</div><div>ProEnergy</div><div>CORPOELEC</div><div>Electricidad de Caracas</div><div>AGENCIA NACIONAL DE INGENIERIA Y PROTECTOS</div><div>SENECA</div></div><div>AMPLIACIÓN DE LA CAPACIDAD DE GENERACIÓN Y TRANSPORTE DE ELECTRICIDAD EN LA ISLA DE MARGARITA ATOMIZING AIR LOWER PIPING ARRANGEMENT DUAL FUEL MOD. UNITS 298034 &amp; 298035 (MLI 0983)</div></div>			
PROYECTO N°:	REV:	ESCALA: 1:20	PLANO No: AGM-02-0204-PLA-M-0031
CALCULO:	PROYECTO:	FECHA: 19/07/11	
REVISADO:	CALCULO:	FECHA: 19/07/11	
DIBUJO: S. Boerckel	REVISADO: J. Castillo	DISK N°	
APROBADO:	ESC./PLOTEO:		
ARCHIVO:	APROBADO: M. Monticelli	ARCHIVO:	PAGINA: 2 DE: 3

LINIA DE CORTE DE ORIGINAL  
LINIA DE CORTE DE COPIA



**IMPORTANTE**  
ESTE PLANO FUE ELABORADO EN AUTOCAD V.2008  
CUALQUIER MODIFICACION REALIZADA EN CAMPO  
DEBERA SER NOTIFICADO A LA UNIDAD  
RESPONSABLE.  
QUEDA PROHIBIDO CORREGIR ESTE PLANO SIN  
AUTORIZACION DE ESTA UNIDAD.

ALL DIMENSIONS IN BRACKETS [ ] ARE  
MILLIMETER; EXPRESSED DIMENSIONS  
ARE INCHES



# ISOMETRIC VIEW

(BACKGROUND REMOVED)

△						
△						
△						
△						
△	19/07/11	ISSUED FOR REVIEW		SAB	CB	TK
REV.	FECHA	REVISIONES O MODIFICACIONES		DIBUJO	REVISO	APROBO

REF. FABRICANTE		
REF. FABRICANTE	FABRICANTE	O/C:

[illegible]